

Alphalite

PROJECT NAME

CATALOG NO.

TYPE

DATE

NOTE

ARK SERIES HIGH MAST LUMINAIRE

ARK1000 Series

DESCRIPTION

The ARK Series Plasma High Mast Luminaire delivers extreme intensity and high lumen output for high mast applications. Superior color, long life and high efficiency allows this luminaire to outperform traditional HID luminaires. Utilizing proprietary plasma technology, the electrodeless lamp and solid state driver enhance lighting quality. Precision-formed reflectors and micro-sized lamp deliver adequate light to road surfaces. Lighting quality and intensity provides benefits for safety and security.

APPLICATION

Outdoor High Mast. Roadway, highway and freeway interchanges, port, docks, container facilities, industrial facilities, airports, trucking facilities, airports.

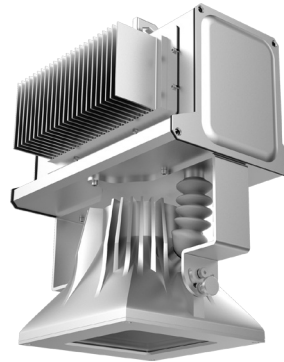
SPECIFICATION FEATURES

Construction

High performance, cutting-edge die-cast housing improves heat dissipation and reliability. Precision-engineered and quality manufactured optics to optimize light delivery to the working plane. Features advanced heat management for efficient power supply and driver operation.

Electrical

Solid state driver with micro-processor technology delivers superior color performance and reduces color shift. Improved lumen maintenance versus traditional HID. Advanced dimming, monitoring, and communications capabilities.



Optics

Various distribution types available.

Warranty

5-year limited warranty. See complete warranty terms for details.

ARK1000

Plasma
High Mast Luminaire

1000W Equivalent

Quick Ship Items

ORDERING INFORMATION

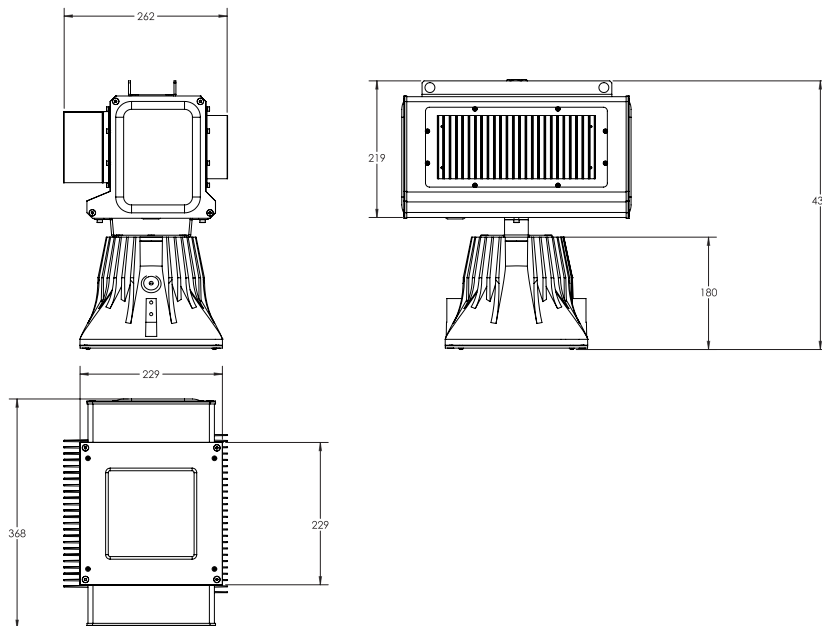
Sample Number: **ARK1000/850**

ARK	1000	8	50	(Blank)
Series ARK = High Mast	Wattage Equivalent 1000 = 1000W HID equivalent	CRI 8 = 80+ CRI	Nominal CCT 50 = 4400K	Distribution Type (Blank) = Type 5

SUMMARY

Input Voltage	120V-277V
Input Frequency	50/60 Hz
Input Power	470W
Initial Lumen Output	40,000 lm
Power Factor	> 0.95
THD (Max.)	20%
Efficacy	85 LPW
Controls/Dimming	Comes standard with 0-10V and Tx-Rx Digital Control
Dimming Range	20-100%
CRI	> 80
CCT	5000K
IP Rating	IP65
Lumen Maintenance (%)	80
Source-PAR (umol/s)	530
Par-Ratio (red-to-blue)	2.5
Rated Life (Avg. Hours)	50,000 hours
Start-up Time	30 sec.
Hot Restrike Time	120 sec.
Operating Temp.	-40°C ~ +40°C

DIMENSIONS



Specifications and dimensions subject to change without notice.

